

TECSYS

Operating Room

Supply Chain Solution

TECSYS Benefits



Improve margin performance



Optimize preference cards



Reduce inventory value and waste



Free up operating room time



Capacity to manage evidence-based PPI standardization



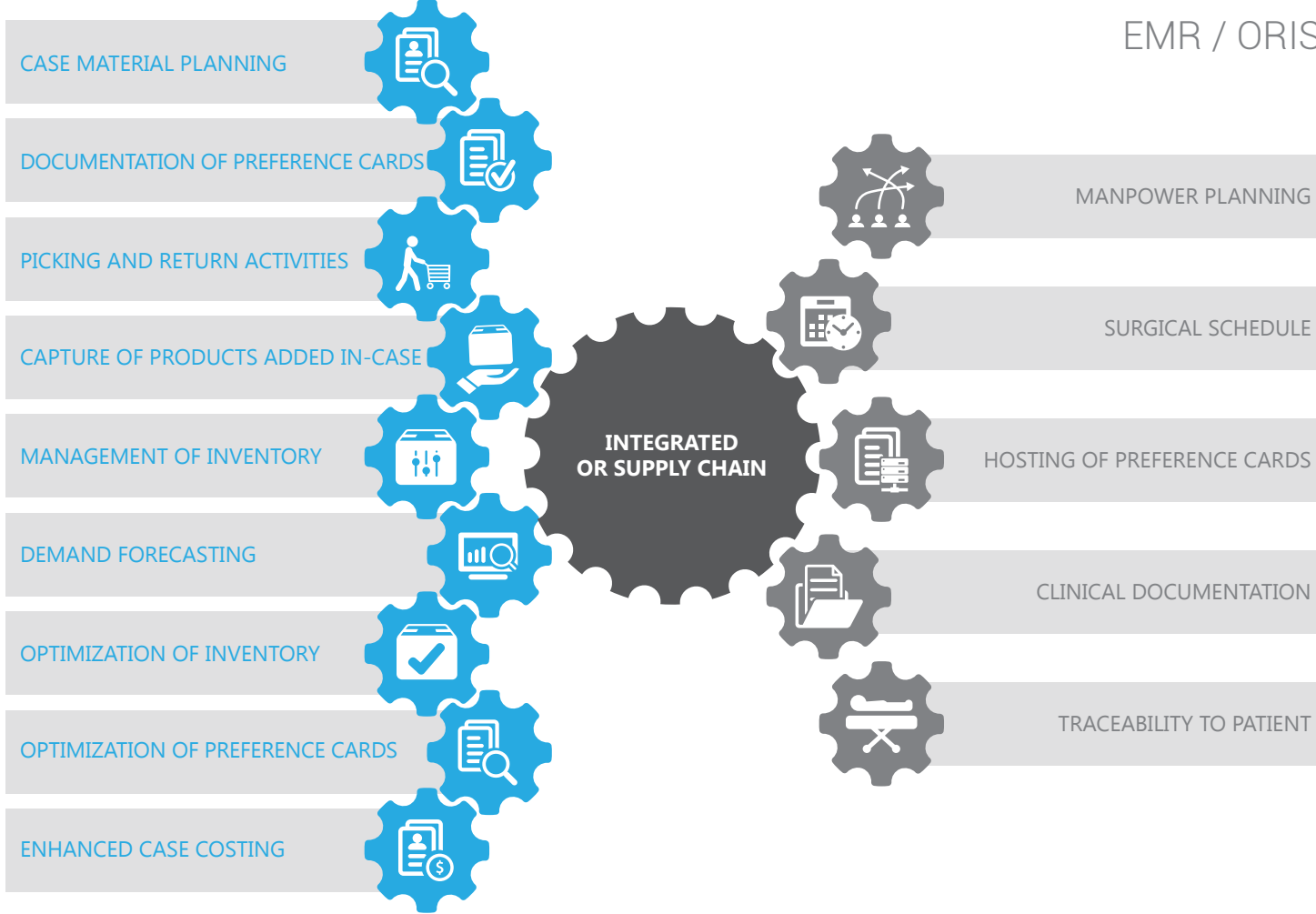
Improve case documentation compliance

The OR Supply Chain solution from TECSYS is all about giving you visibility and control over your operations and making them more efficient. It automates your case picking and logistics activities right inside your procedural environments. It coordinates and manages physician preference cards, which optimizes case management functions and reduces costs by eliminating unnecessary waste. Integrated with your other systems, it feeds information where it adds value, and eliminates redundant data entry wherever possible. The OR Supply Chain solution captures costs more accurately and with less involvement from your clinical staff, giving them their valuable time back to focus on patient care.

Complementary Value for OR Systems

The OR Supply Chain solution adds supply chain functionality and provides complementary value to your current EMR system. Connecting your EMR system to the OR Supply Chain solution feeds new data streams into your OR case documentation, and breaks down your OR department's data silos by folding other systems – like your instrument tracking system – into a common and centralized platform.

TECSYS



OR Inventory Management

Inventory practices and data capture methods are based on the type of inventory being managed. In an OR, accurately picking for cases and precisely capturing the cost of all items used during clinical activities is extremely important. The OR Supply Chain solution achieves this by integrating your automated materials management and case costing processes. Not only is this more efficient, it also means your clinical caregivers spend less of their valuable time involved in inventory management.

Inventory types

<p>High value items</p>	<p>Implants and consignment</p>
<p>Instrument trays</p>	<p>Screws and plates</p>
<p>Bone and tissue</p>	<p>Vendor-managed inventory / Trunk stock</p>

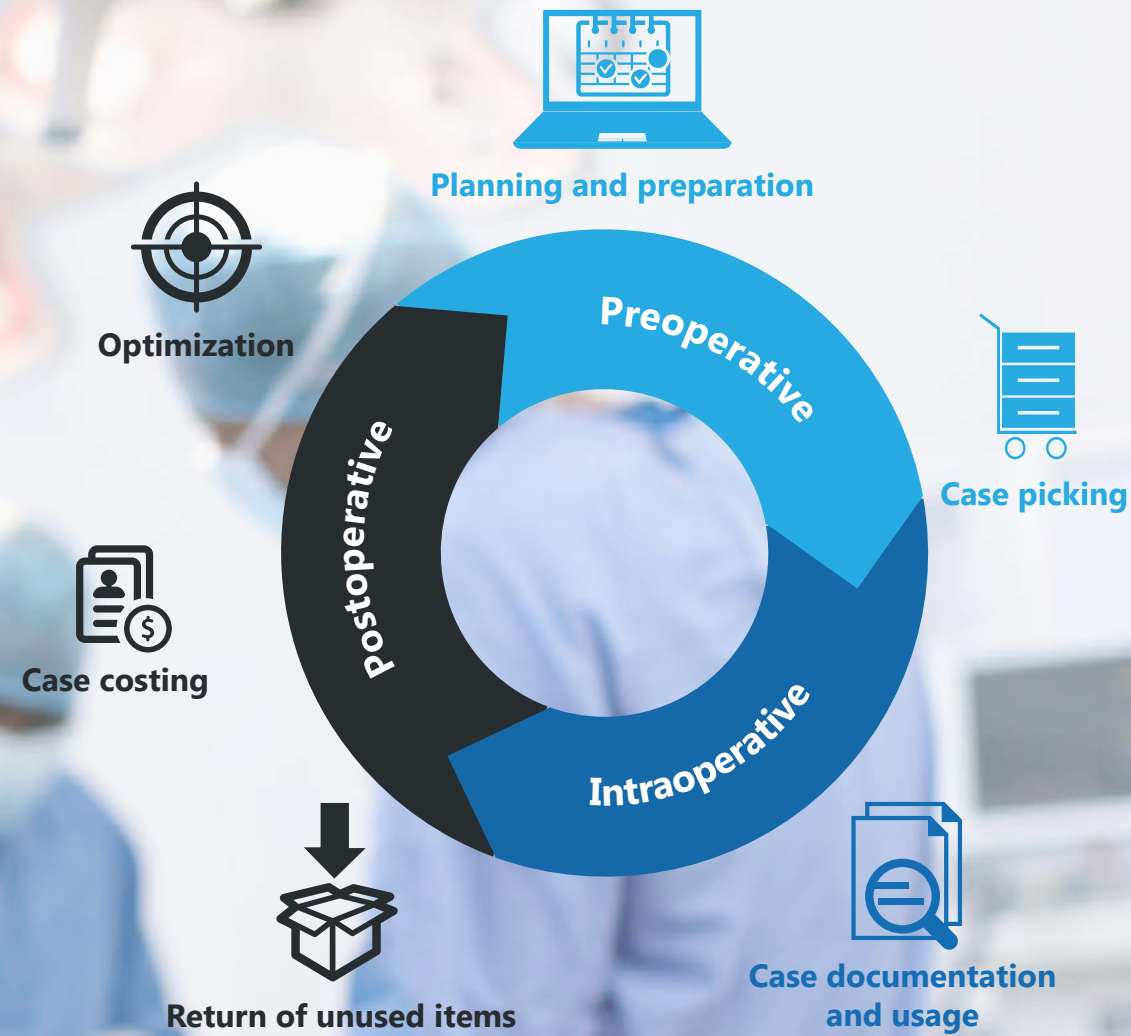
Inventory practices

<p>PAR level</p>
<p>Two-bin kanban</p>
<p>Unitary tracking and tracing</p>

Data capture methods

<p>THIRD PARTY TECHNOLOGY</p>	
<p>Mobile device</p>	<p>Barcode scanner</p>
<p>PROPRIETARY RFID HARDWARE</p>	
<p>smartpanel</p>	<p>smartbin</p>
<p>PROPRIETARY SOFTWARE</p>	
<p>Vendor Portal</p>	<p>Clinical User Interface</p>

OR Case Management Flow



OR Case Management Flow Preoperative

The OR Supply Chain solution allows you to itemize the required supplies for each case and easily manage the preparation of case carts. Resource allocation is performed for every case cart, giving you full visibility into your inventory requirements and demand.

Taking into account your perioperative schedule and case picking flow, the system adjusts the picking routes and greatly shortens the overall picking time, guiding you through the process using mobile technology.



Planning and preparation

- Allocate enough material resources to avoid shortages and delays
- Oversee case material demand planning
- Integrate with your EMR system
- Access case picking status dashboard anytime
- Control vendor-managed inventory

Case picking

- Carry out guided picking activities
- Assign case carts for full-cycle inventory movement visibility
- Use mobile devices and RF handhelds
- Optimize picking flow



OR Case Management Flow Intraoperative

The *Clinical User Interface*, integrated with your EMR, simplifies materials documentation and data capture through the balanced use of touch, barcoding, RFID technology and advanced search capabilities. Together, they avoid disruptions in your clinical workflows, effortlessly capture your intraoperative supply usage and eliminate any double entry processes.

Cost savings and patient safety are achieved through a fully automated information flow in which your supply usage and patient traceability are captured, tracked and measured for your business intelligence. The immediate impact is that your clinical personnel are no longer encumbered by manual tasks. The long-term impact is better visibility, more consistent consumption capture and excellent compliance mapped to existing clinical workflows.

Key capabilities

- Collect supply usage data and trigger demand requisitions automatically without manual transcriptions or double-entry documentation
- Preserve your current workflows through flexible and non-intrusive process adaptations and integration
- Reallocate clinical time being spent on inventory-related tasks to more value-added tasks
- Reduce charge discrepancies and improve charge reconciliations by simplifying and streamlining your user interface
- Lower expense write-offs by automating supply usage capture for reimbursable products
- Reduce the costs associated with product expiration, loss and complex invoice and inventory reconciliation processes
- Face new and emerging interoperability requirements with a solution designed to scale with you

Case documentation and usage

- EMR integration
- Single point of data entry
- Intuitive *Clinical User Interface*
- Multiple data capture technologies:
 - Universal barcode recognition
 - RFID-enabled smartbin
 - User-dependent predictive search engine



OR Case Management Flow Postoperative

The OR Supply Chain solution reduces the number of steps in capturing and returning unused items by automating the process wherever possible. Having fewer steps not only increases efficiency, it reduces the risk of errors, and it accurately closes the case costing loop to give you as exact a cost for your procedures as possible.

In addition to case costing accuracy, properly tracking returned items lets you identify patterns in those returns. Over time, the statistics gathered can produce meaningful and fact-driven analytics that contribute to per-procedure and per-physician insights, preference card optimization and fewer unnecessary pick and return cycles, all while minimizing time spent on process and data collection.

Return of unused items

- Identify what is truly returned vs wasted vs soiled
- Get real-time updates to your picking lists
- Return unused items following guided protocols

Case costing

- Identify physician case costing trends against a procedure or other physicians
- Feeding data towards preference card and PPI optimization
- Accumulate data for fact-driven analytics



OR Advanced Analytics

Operational Analytics

Complete OR inventory visibility with proactive expiration and recall management

Preventing products from passing their expiry dates and managing product recalls more easily are keystones of the OR Supply Chain solution. Real-time dashboards and technology with built-in alerts and notifications take proactive and preventative steps to make sure the right people have the information they need to make smart decisions about what supplies to use and when.

- Get a pulse of on-hand inventory levels across your OR department
- Prioritize the use of supplies based on expiration
- Identify recalled items and quickly remove them from your shelves
- Use guided protocols and notifications to lower your dependence on the specific product and storage location knowledge of employees

Optimization Analytics

Preference card optimization and supply usage analysis

The OR Supply Chain solution aggregates data over time so that you can benchmark the cost per procedure – and ultimately, per patient – precisely and without clinical interruption. Because the solution captures all case-related information, including exact pick, usage and return data, it enables fact-driven preference card optimization and exceptional case costing accuracy.

- Make updates to the list of items used for a procedure in order to reduce the number of unnecessary picks and returns, thus shortening the overall case picking process
- Analyze case movements
- Access analytics that go beyond the inventory service line:
 - Actual month over month cost
 - Actual cost per physician
 - Actual cost per case
 - Actual cost per procedure
 - Time period comparisons & monthly variance



One Consolidated Platform

Healthcare organizations need to be able to choose point-of-use solutions that respond to each department's needs but also have a centralized platform for inventory management. Our approach is to combine both. We provide specific solutions tailored to different areas of the hospital while connecting all point-of-use systems, both proprietary and third party, to enable our clients to gain a global view and manage their many locations as one entity.

Our OR Supply Chain solution is one branch of a consolidated point-of-care platform. This platform, which we call ITopia®, acts as a central hub for all point-of-use data captured. This provides healthcare organizations with a total overview of their information flow which enables powerful network-wide analytics and intelligent decision-making.



Copyright © TECSYS Inc. 2016

All names, trademarks, products, and services mentioned are registered or unregistered trademarks of their respective owners.



1 Place Alexis Nihon, Suite 800, Montreal, QC, Canada H3Z 3B8

www.tecsys.com // info@tecsys.com // Phone: 514-866-0001 // Toll Free: 1-800-922-8649

Printed in Canada